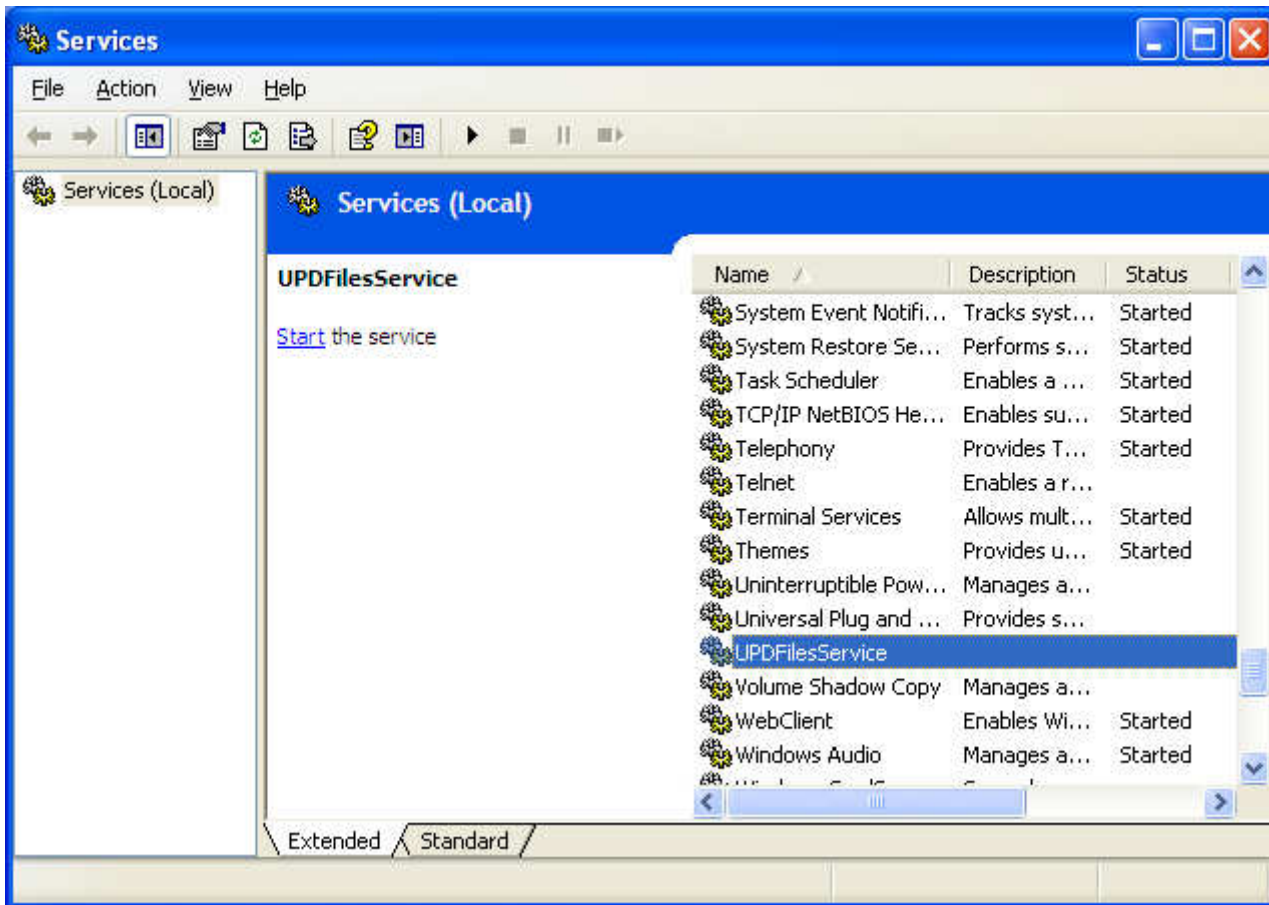


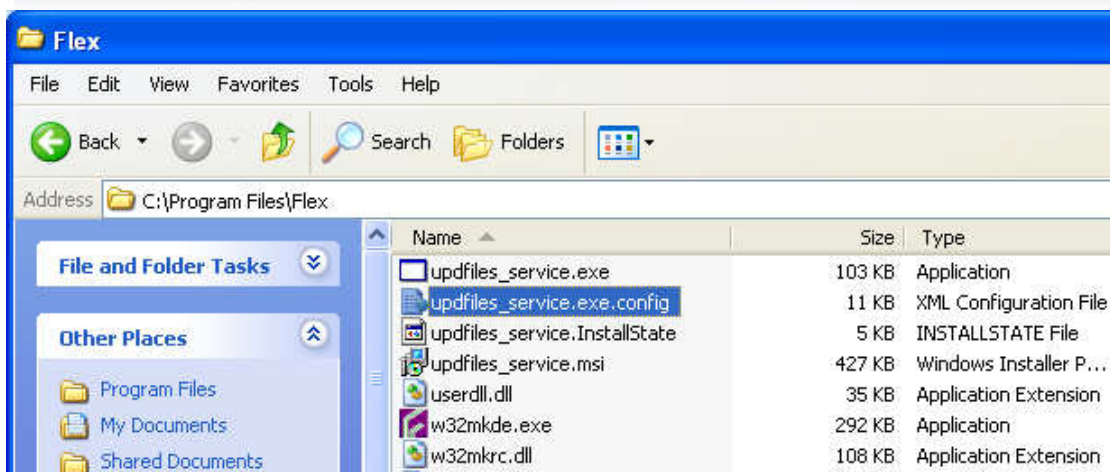


Flex Upfiles - Service

After installation of the service please ensure you start the service. This utility does not start automatically and provides you the opportunity to configure your setting prior to startup.



****Please read the new settings info below, you MUST update new fields for how you want the service to operate!!**



The comments for all the fields are:

Instructions for the SuperClones setting:

Comments cannot appear within the <value> block below - XML rule.

CFAED0000 is a super-clone that does not update any asset dates.

CMONEXTLF1 is a super-clone that updates one date, namely Next_Inspection_Date.

CYRLYEXLF1 is a super-clone that updates two dates, namely Next_Inspection_Date and Next_Test_Date.

Commas separate the super-clone specifications (putting each on its own line makes it look nice, but is not necessary)

'+' indicates the next symbol is the name of a date field to update. NO EMBEDDED SPACES ALLOWED.

Instructions for the DateIncrements setting:

Every date field that appears above as an updated date field must have an entry down here.

Format is date field name followed by '+' followed by a number followed by D, M, or Y.

D for Day, M for Month, Y for year. The number is the number of D/M/Y to add to the transaction date to form the new date field value.

There can only be one such unit - "DateField+1Y+1M" is illegal, must be: "DateField+13M".

Same rule of commas separate each date field specification.

Instructions for the PDAToDatabase_Schedule and DatabaseToPDA_Schedule settings:

These two fields set the schedule for when the two update procedures are run:

PDAToDatabase_Schedule controls when the transaction files from the PDA are posted to the database.

DatabaseToPDA_Schedule controls when the point, route, question, etc. data files for the PDA are created.

The format for these two settings are the same. There are two ways to specify a schedule:

Run the procedure at a specified frequency. Legal suffixes are m and h. Examples are:

+1m : Run once a minute

+2h : Run every 2 hours (12 times a day)

+72h : Run once every 3 days (72 hours)

Run the procedure at specific times of the day, every day. Times are 24hr. Examples are:

8:00,12:00,16:00 : Run 3 times a day, 8am, noon, and 4pm

0:00,12:00 : Run twice a day, exactly at midnight and noon (24:00 is NOT legal)

17:00 : Run every day at 5:00pm

Instructions for the DataFileBaseDirectory setting:



This specifies where the service will look for the upload, download, and archive directories.

Example: C:\Program Files\Flex

If the value is empty, the installation directory for UPDFFilesService is used.

The XML line for an empty value is: <value />

Instructions for the SysBaseDirectory setting:

This specifies where the service will look for the sys directory.

Example: C:\Program Files\Flex

If the value is empty, the installation directory for UPDFFilesService is used.

The XML line for an empty value is: <value />

The path given must NOT contain the "sys", but rather specify where "sys" is located.

Instructions for the UpdfilesReportsAppFullPath setting:

This specifies where the service will look for the emailer that's run every time a PDA file is processed

Example: C:\Program Files\Flex\reports\Email\UpdfilesReports\UpdfilesReports.exe

Instructions for the DailyReportAppFullPath setting:

This specifies where the service will look for the emailer used to mail Daily reports

Example: C:\Program Files\Flex\reports\Email\DailyReports\DailyReports.exe

If the value is empty, no Daily reports sender will ever be called.

Instructions for the DailyReportSendTime setting:

This specifies what time each day the Daily reports executable will be called.

Example: 7:00

If the value is empty, no reports of any kind will be send (Daily or Monthly).

Instructions for the MonthlyReportAppFullPath setting:

This specifies where the service will look for the emailer used to mail Monthly reports

Example: C:\Program Files\Flex\reports\Email\MonthlyReports\MonthlyReports.exe

If the value is empty, no Monthly reports sender will ever be called.

Instructions for the MonthlyReportSendDay setting:

This specifies what day of the month the Monthly reports executable will be called.

The report will be sent on that day, at the same time of day as when the Daily report is sent.

Example: 1 (this would send the Monthly report on the first of the month, just after sending the Daily report.

Instructions for the LogLevel setting:

This specifies the amount of information written into the log.

1 = Errors only

2 = Normal status

3 = Verbose mode, lots of information, can grow the log quickly

This value can be changed in the config file while the service is running, and will affect the log files starting with the next scheduled activity.